

# SPOT HUG

Satellite-based GPS Security System to protect your boat from theft while delivering everyday peace of mind and emergency assistance when you need it.

When you are away from your boat, ensure it remains safe. Using state-of-the-art satellite technology, SPOT HUG monitors your boat against theft even from remote areas beyond cellular coverage.

## MONITORING YOUR BOAT

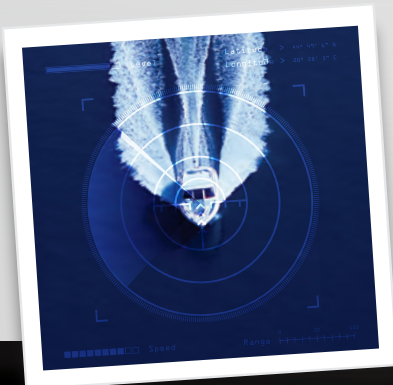
Transmits Unauthorized Movement notifications and Daily Status updates including GPS position and Sensor Alert status.

## ADDITIONAL MONITORING CAPABILITIES

Connect SPOT HUG to additional sensors to monitor battery voltage, high water, door/hatch intrusion, smoke/fire and more.

## SOS

In a critical or life-threatening emergency, the SOS function notifies the GEOS International Emergency Rescue Coordination Center of your location every 5 minutes.



## KEY FEATURES

- Unauthorized Movement detection alert is automatically transmitted to the Asset Monitoring Center
- 100% satellite based for maximum coverage
- Receive Daily Status message with boat's location and any sensor notifications
- Receive Sensor Alerts via SMS or email
- SOS message notifies GEOS International Rescue Coordination Center of your GPS location in a real emergency
- Check-in/OK and Help messages sent to your contacts by email/SMS via satellite
- Key FOB for easy wireless activation and managing SPOT functions
- Wireless Keypad security and messaging system
- Online account profile for managing SPOT messages and contact lists
- Easy to install
- Track Progress allows others to view your location using online Google Maps™

To learn more visit [findmeSPOT.com](http://findmeSPOT.com)



Keypad



Tracker



Key FOBs

## UNAUTHORIZED MOVEMENT NOTIFICATION

By establishing a virtual security perimeter around your boat, SPOT HUG detects Unauthorized Movement. The Asset Monitoring Center is notified and provided the GPS location to alert nearby authorities (where available).



# Satellite Based GPS Security System

## SATELLITE TECHNOLOGY

### GPS Satellites:

21 ft (6.4 m) location accuracy

### LEO Satellites:

1610-1618.725 MHz L-band frequency

## DEVICE SPECIFICATIONS

### Device Specifics:

Tracker

Size: 3.79" X 3.79" X 1.30"

(9.79cm X 9.79cm X 3.3cm)

Weight: 10.5oz (297.7gms)

GPS Lat. Lon. datum format: WGS-84

Keypad

Size: 2.96" X 3.77" X .5" (7.5 X 9.6 X 1.4cm)

Weight: 4.4oz (124.7 gms)

FOB

Size: 1.74" X 2.94" X .61" (4.4cm X 7.5cm X 1.55cm)

Weight: 1.3 oz (36.9 gms)

### Operating Environment:

#### Tracker:

- 12/24 VDC line power input with 4 sets of wires for Sensor Alerts
- IP67 Waterproof to a depth of 1 meter for up to 30 minutes
- Operating temperatures: -22°F to +185°F (-30°C to 85°C)
- Operating altitude: -328 ft to 21,320 ft (-100m to 6,500m)
- Humidity and Salt Fog rated
- Vibration Sensor is compliant Per SAE J1455, Random, 20 Hz to 2000 Hz, 0.04g2/Hz, one hour per axis

#### Keypad and Key FOB:

- Operating temperatures: -8°F to +140°F (-20°C to 60°C)
- Humidity and Salt Fog rated

## BATTERY SPECIFICATIONS

Tracker: 4 AA Energizer Ultimate Lithium

SPOT MODE	THEFT RECOVERY MODE	BATTERY LIFE (DAYS)
None	No Vibration	336
None	Vibration, Armed, No Unauthorized Boat Movement	19
None	Vibration, Armed, Unauthorized Boat Movement	13
SOS or Help	Off	12
Track Progress	Off	19
Check-In/OK	Off	110

Keypad: 2 CR2032 cells

# OF BUTTON PRESSES PER DAY	BATTERY LIFE
0	6 years
5	2-1/2 years
10	1-1/2 years

- Waterproof to IPX7 standard
- Able to withstand a drop on all six sides from 1 meter onto a concrete surface

### Certifications:

FCC, IC, CE, RoHS, WEEE

## ADDITIONAL SERVICE FEATURES

**Emergency Response Center:** GEOS is operational 7 days/wk. 365 days a year, operating out of Houston, Texas (2 addl. backup locations)

### Emergency Communication:

If no GPS fix is acquired in SOS mode, SPOT still sends a distress signal without the GPS position to the emergency response center

### Google Maps™:

All SPOT waypoints are displayed in Google Maps™ in your account and through Shared Pages for easy viewing

### Data History:

All SOS, Help, Check-in/OK and Track Progress messages are stored in the SPOT account at [www.findmespot.com](http://www.findmespot.com) for up to 30 days for review, mapping and sharing. Live data viewing available up to 7 days

### Data Archiving:

Data can be exported for long term archival in the following formats: CSV (spreadsheet), KML (Google Earth™), GPX (GPS data) and at [www.spotadventures.com](http://www.spotadventures.com)

**Shared Page:** You can share messages and locations with others via a personal shared page (optional password protection) or SPOT Adventures account at [www.spotadventures.com](http://www.spotadventures.com)

**Security:** Data protection via the latest techniques. 3rd party penetration testing two times/yr by Plynt.com  
VeriSign certificate (Share Page & Login Site)  
Latest security patches updated quarterly  
Network has firewalls and port scanning

Key FOB: 1 CR2032 cells

# OF BUTTON PRESSES PER DAY	BATTERY LIFE
0	1-1/2 years
5	1 year
10	240 Days

SPOT performance and battery life may be degraded in operating environments where the SPOT GPS chip must take a longer time to acquire your GPS location, such as trying to send a message indoors or under extreme canopies. Colder conditions can impact battery life. Under normal usage a full battery charge should meet or exceed these amounts.

## SPOT MESSAGING FUNCTIONALITY

Provides reliable, location-based messaging via satellite from outside cellular range and independent of VHF radio. Let loved ones know where you are and that you're OK or send a message for help in a real emergency. Includes functionality for SOS, Help, Check-in/OK and Track Progress.

**S.O.S.** **SOS:** Emergency assistance request sent with your GPS location to GEOS every 5 min until batteries die or until cancelled

**HELP/SPOT ASSIST** Request help from friends and family every 5 min for 1 hour. Up to 10 contacts – SMS & email

**✓ OK** **CHECK-IN/OK** Lets contacts know where you are and that you're okay. Attempts to send three messages to help ensure successful transmission. Up to 10 contacts – SMS & email. Contacts will receive only 1 message

**TRACK PROGRESS** Acquires your GPS location every 10 minutes for 24 hours. Sends each location one time. Previous 2 track points sent with current track point helping ensure consistent recording of movements