

Short Instruction for Leica Geo Office Tools (LGO-Tools)



Author: Christian Schäfer
Version 1.0
Date: 06.10.2004

Table of Contents

<u>Chapter</u>	<u>Page</u>
Table of Contents	2
Installation & Start	3
General	3
Set Instrument Type	4
Codelists	5
Data Exchange Manager	6
Software Upload	6
Format Manager	6
Configuration Manager	7
Coordinate Editor	7

This instruction describes briefly the main tools functions of Leica Geo Office Tools.
To get more information about each issue, we recommend to read the Online Help.

Installation & Start

1. Install LGO-Tools on your PC.
→ For this, please follow the instructions of the installation CD.
2. Start LGO Tools
→ Double-click on the desktop icon or from the menu.



General:

After starting the program, the following menus are available:

Management



Projects

→ Enables you to manage Projects. → See Online Help

Codelists

→ Enables you to create and manage codelists for uploading.

Tools



Raw Data import

→ Enables you to import GSI-coordinates data into a project. → See Online Help

ASCII Data Import

→ Enables you to import ASCII-coordinates data into a project. → See Online Help

ASCII Data Export

→ Enables you to export coordinate data from a project. → See Online Help

Data Exchange Manager

→ Enables you to up- and download data.

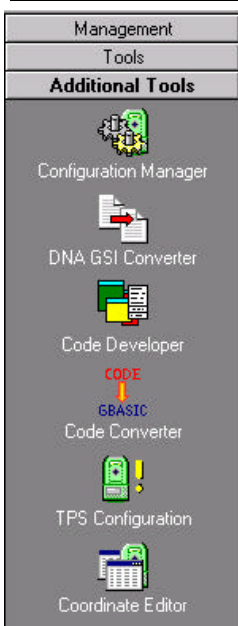
Software Upload

→ Enables you to upload new firmware to the instrument

Format Manager

→ Enables you to create formats for data download from Instrument

Additional Tools



Configuration Manager

→ Enables you to configure your instrument settings.

→ For DNA

→ For TPS1000

→ For TPS1100, TPS1000

→ For TPS1100, TPS1000

Coordinate Editor:

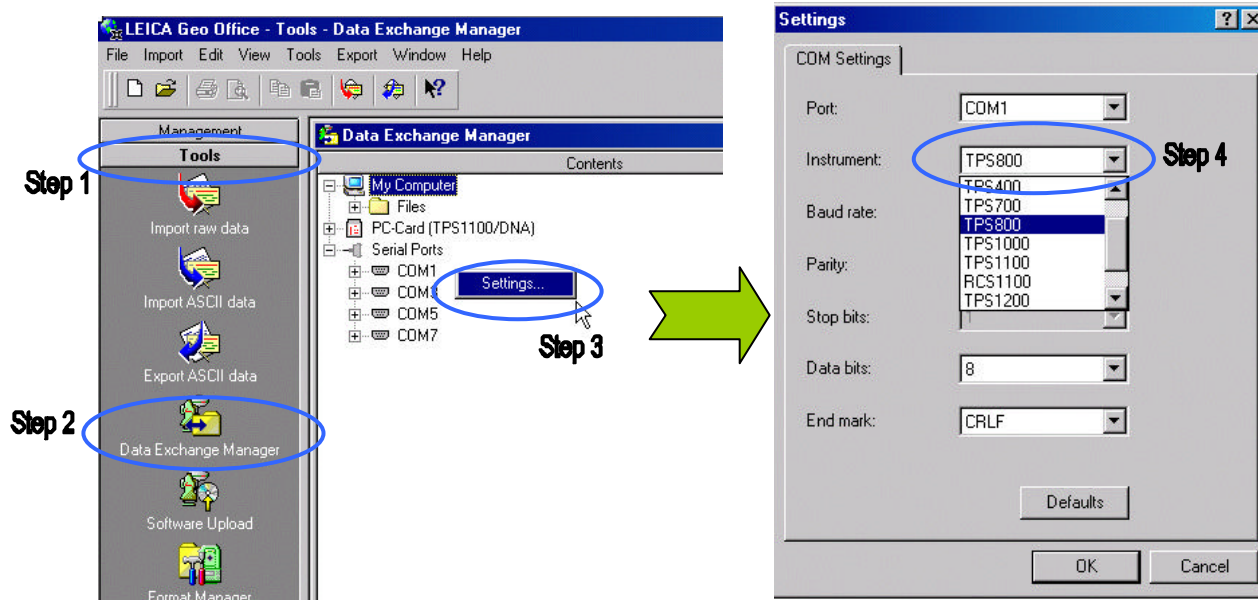
→ Enables you to create coordinate lists for uploading.

Set Instrument Type

1. Select TOOLS on the left-sidebar
2. Press on the "Data Exchange Manager" icon



3. Move the mouse into the left window, and make a right mouse click
4. Click on the window SETTINGS
5. Select the instrument type and change parameters if required.



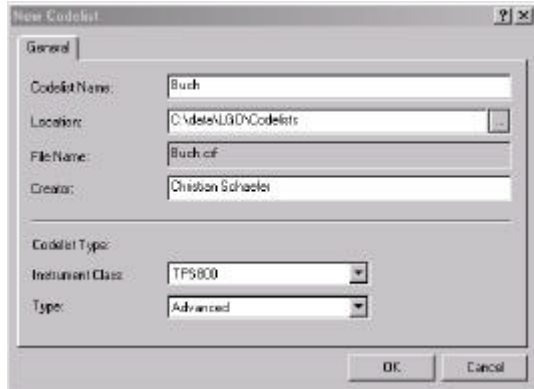
Note: The Codelist Management can manage several Codelists.

1. Select MANAGEMENT on the left-sidebar & click on the Codelist icon

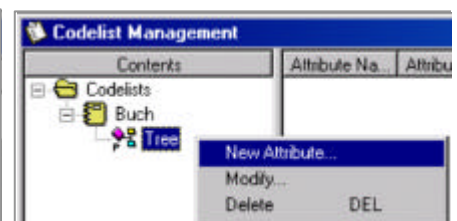
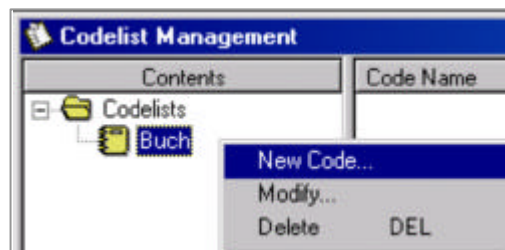


1. Create a new Codelist, enter Codes and Attributes

1. Click the right mouse button, when you are on the Codelist symbol (shown below)
2. Select "New Codelist" by clicking on it.
3. Type in the requested Information, like Codelist Name (e.g. Buch), Instrument Class. In the field LOCATION you can type in where the codelist should be stored. For frequent users we recommend to select the "Advanced" option under TYPE and proceed with OK



4. To enter a code, press the right mouse button when you are on the new codelist and select "New Code"
 5. Type in the Codename (e.g. Tree) and a Discription
 6. To enter a attribute, press the right mouse button and select "New Attribute".
 7. Type in the attribute name and select the type and default value, if required.
- To create more attributes repeat steps 6 & 7 or mark the attribute and make CTRL+C and CTRL+V and change the properties by right mouse click.
8. For uploading the codelist, please refer to the chapter "Up- & Download of Data"



2. Open a existing codelist. made in Leica Survey Office

1. Click the right mouse button, when you are on the Codelist symbol (shown above)
2. Select "Register" by clicking on it.
3. Use the browser to locate your "old" codelist. If the folder contains several codelists, select the codelist by using the pull-down menu of the subject "Name"

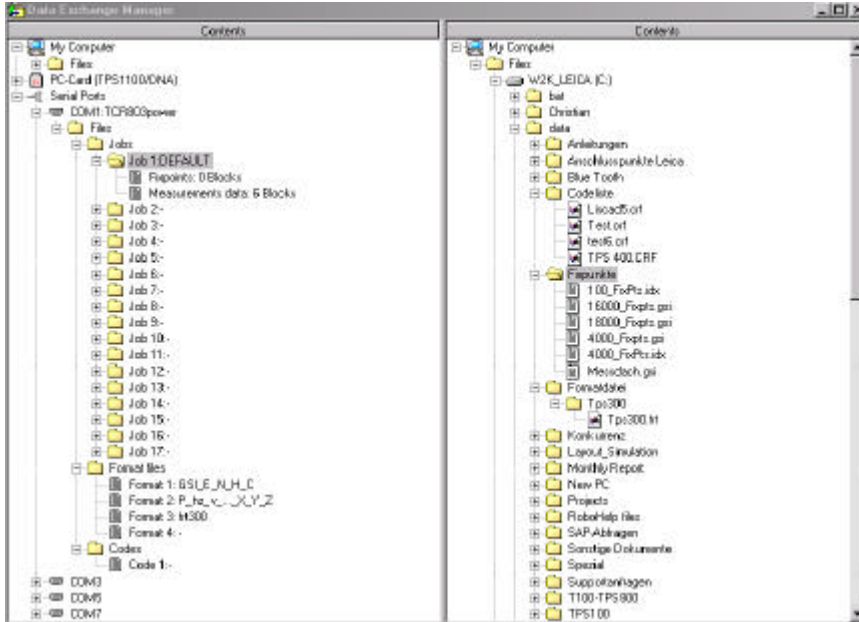


Data Exchange Manager (→ Up- & Download of Data)

1. Select TOOLS on the left-sidebar
2. Kick on the icon “Data Exchange Manager”
3. On the left side you see the available serial ports. Select the Com port, with which your instrument is connected and press on the + Symbol until it collapsed completely.
4. On the right side you see the disk structure of your PC. Select the files and transfer the files by using the Windows “drag & drop” method. The transfer is indicated by a special window. (See below)



Data Exchange Manager



Following file types can be transferred:

Upload:

- Coordinates (Fixpoints)
- Formats
- Codelists

Download:

- Measurements
- Coordinates (Fixpoints)



Software Upload

1. Select TOOLS on the left-sidebar
2. Kick on the icon “Software Upload” icon.
3. Follow the instructions of the Installation wizzard !



Software Upload



Format Manager

1. Select TOOLS on the left-sidebar
2. Kick on the icon “Format Manager” icon.
3. For further details, please refer to the online help and the separate Manual, delivered in the same CD.



Format Manager

Configuration Manager

1. Select ADDITIONAL TOOLS on the left-sidebar & click on the “Configuration Manager” icon



Creates a new configuration template, where you can make the settings.



Opens a saved template → (*.cfg)



Transfers the displayed configuration from the PC to the Instrument



Transfers the current Instrument configuration to the PC and displays it.



Saves a configuration file → (*.cfg)



After you created, downloaded or opened a file, the following window will appear.

Noname1				
TPS800 - Configuration	System	Units	Angles	
Subject	Settings	Fixed	Comment	
EDM Dist-Mode	IR-Fine	no	Set EDM default measuring mode	
USER-Key	IR<=>RL (IR_RL Toggle)	no	Assign one of the FNC-functions to the USER-Key	
Trigger-Key	ALL	no	Disable the Trigger-Key or assign the ALL or DIST-Command to the Trigger-Key	
Face I Definition	V-Left	no	Set Face I definitions V-Left = vertical tangent screw on left side V-Right = vertical tangent screw on right side	
Beep	Loud	no	Set status for Beep	
Sector-Beep	Off	no	Enable or disable Sector-Beep	
Display-contrast	50 %	no	Set Display-Contrast in 10% steps (0% - 100%)	
AutoOFF	Disable	no	Set automatic Power-Off conditions (Enable = After 15 Mins Power Off, Sleep mode : Standby)	
Rec-Device	Internal Memory	no	Set Recording Device (Internal Memory or RS232)	
Code Recording	Before measurement	no	Set Code recording before or after the measurement	
GSI Output Format	GSI-8	no	Set GSI-Data Format for output from RS232 and Internal Memory	
GSI Mask	Mask 1	no	Set GSI Mask to Mask 1 or Mask 2	
Job Arrangement	Fixpoints + Measurements	no	Fixpoints + Measurements = Provides Fixpoints and Measurements within one Job, F	
RS232 Acknowledge	Enable	no	Enable = Use a '?' as acknowledge, Disable = no acknowledge used	
Reticle-illumination	Medium	no	Set status for Reticle illumination	

TPS800 - Configuration	System	Units	Angles	
Subject	Settings	Fixed	Comment	
Angle	Degrees (" ' ")	no	Set units for angles	
Distance	Meter	no	Set units for distances and distance related values	
Pressure	mbar	no	Set units for pressure	

TPS800 - Configuration	System	Units	Angles	
Subject	Settings	Fixed	Comment	
Hz Collimation	On	no	Set status to apply Hz-Collimation	
Hz increment	Right	no	Set Hz-angle increment (clockwise or anti-clockwise)	
V Settings	Zenith	no	Set Vertical angle zero position (zenith/horizontal/Slope %)	
Compensator	Dual axis	no	Set the compensator to off or to single axis (only vertical angles corrected) or to dual	

Subject: Shows what item can be configured.

Settings: Shows what the subject can be assigned

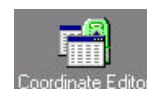
Fixed: NO: Allows the user to change the settings at the Instrument

YES: This setting can't be changed at the instrument after uploading the file. To reset this Setting, you have to use the Configuration Manager again.

Comment: Detailed description of the subject.

Coordinate Editor

1. Press on the “Coordinate Editor” icon in the Additional tools submenu.
2. Select FILE, NEW to open an empty coordinate sheet.
3. Enter the coordinates and save the file.
4. For uploading the coordinates, please refer to the chapter “Up- & Download of Data”



Coordinate Editor - 100_FixPts.idx					
File Edit View Options Window Help					
100_FixPts.idx					
	Point Id	Easting	Northing	Elevation	Code
1	1	120.0000	125.0000	21.0000	
2	2	121.0000	127.0000	24.0000	
3	3	122.0000	129.0000	27.0000	
4	4	123.0000	131.0000	30.0000	
5	5	124.0000	133.0000	33.0000	
6	6	125.0000	135.0000	36.0000	
7	7	126.0000	137.0000	39.0000	
8	8	127.0000	139.0000	42.0000	
9	9	128.0000	141.0000	45.0000	
10	10	129.0000	143.0000	48.0000	
11	11	130.0000	145.0000	51.0000	
12	12	131.0000	147.0000	54.0000	
13	13	132.0000	149.0000	57.0000	
14	14	133.0000	151.0000	60.0000	